

CONFIX FWS-B

Bulkhead Fittings for Direct Conduit Pickup



Grooved conduit clip



Fixed cover due to hinges



Type	Dimension*	Hole Ø [mm]	Size (A × B) [mm]	Cut-out (C × D) [mm]	Drill. Templ. (E × F) [mm]	Order No.	PU
CONFIX FWS-B 11	NW 13	3 × 4.3	49 × 45	22 × 22.6	29 × 37	■ 31410 ■ 31411	10
CONFIX FWS-B 16	NW 17	3 × 4.3	49 × 45	22 × 22.6	29 × 37	■ 31413 ■ 31414	10
CONFIX FWS-B 21	NW 23	3 × 6.6	67 × 63	37 × 28	41.5 × 51.5	■ 31416 ■ 31417	10
CONFIX FWS-B 29	NW 29	4 × 6.6	85.5 × 76	41.9 × 40 r = 20	64.5 × 64.5	■ 31419 ■ 31420	10
CONFIX FWS-B 36	NW 37	4 × 6.6	97 × 92	48.3 × 48.4 r = 24.2	79.5 × 79.5	■ 31422 ■ 31423	5
CONFIX FWS-B 48	NW 50	4 × 6.6	111.5 × 100.5	53 × 60.5 r = 30.25	87.5 × 87.5	■ 31425 ■ 31426	5

Advantages & Benefits

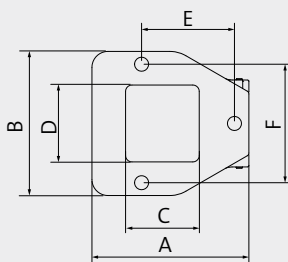
- Hinged cover
- Fast and easy installation
- Functional design
- Protection class IP54

Specifications

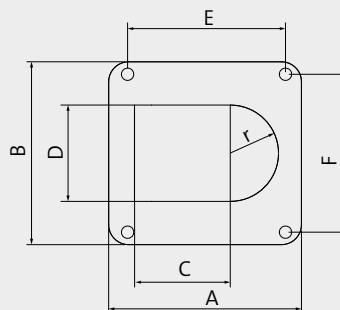
Material	Polycarbonate (PC)
Color	■ black (RAL 9005) ■ gray (RAL 7011)
IP rating	IP54
Flame class	UL94-Vo, self-extinguishing
Temperature	-30°C to +100°C (static) -22°F to +212°F (static)
Properties	Halogen free, silicone free

Accessories

CONFIX WS conduits 136 - 137



Size / Drilling template
FWS-B 11 to 21



Size / Drilling template
FWS-B 29 to 48

* For parallel corrugated cable protection conduit with dimension (NW)